

## Double Mesh Plastic Spacers

Adjustable and fixed stacer for double mesh

PRODUCT TYPE	DMPSA-4 3/4"	DMPSA-4 6/2"	DMPS-4"	DMPS-6"	DMPS-8"
COVERAGE	4 3/4" to 6"	6/2" to 10"	4 in	6 in	8 in
CAPACITY (PSI)	2133				
WEIGHT (Lb)	9,02	7,10		6,13	6,18
SPACERS PER AREA (Yd)	4				
STEEL BAR DIAMETERS	1/4" - 5/16"				
APPLICATIONS	WALLS AND COLUMNS				

## Foundation Plastic Spacers

Are designed for horizontal reinforcement steels to withstand large loads

PRODUCT TYPE	FOPS-1"	FOPS-1 1/4"	FOPS-1 1/2"	FOPS-2"	FOPS-3"	FOPS-4"-5"
COVERAGE	1 in	1 1/4 in	1 1/2 in	2 in	3 in	4" - 5"
CAPACITY (PSI)	3555					
PACKAGING UNIT	120				40	20
WEIGHT (Lb)	6,99				4,70	3,10
SPACERS PER AREA (Yd)	4					
STEEL BAR DIAMETERS	1/4" - 5/8"					
APPLICATIONS	HORIZONTAL STEEL STRUCTURE					

## Pylon Plastic Spacers

Plastic Wheel for Pylon: Guarantees a space of 7.5cm

PRODUCT TYPE	PPS 3"
COVERAGE	3 in
CAPACITY (PSI)	2133
WEIGHT (Lb)	5,14
PACKAGING UNIT	30
SPACERS PER AREA (Yd)	4
STEEL BAR DIAMETERS	1/4" - 3/8"
APPLICATIONS	WALLS AND COLUMNS

## Floor Plastic Spacers

Modern design that facilitates the installation of electro welded meshes

PRODUCT TYPE	FLPS-1"	FLPS-1 1/4"	FLPS-2"	FLPS-2 1/2"	FLPS-3"	FLPS-3 1/2"	FLPS-4"
COVERAGE	1 in	1 1/4 in	2 in	2 1/2 in	3 in	3 1/2 in	4 in
CAPACITY (PSI)	2844						
PACKAGING UNIT	220	280	130	80	70	70	
WEIGHT (Lb)	5,95	7,63	5	4,06	4,48	4,94	
SPACERS PER AREA (Yd)	4						
STEEL BAR DIAMETERS	1/4" - 5/8"						
APPLICATIONS	HORIZONTAL STEEL STRUCTURE						

## Rebar Protector

Universal rebar rod protector in bright orange

PRODUCT TYPE	RP
COVERAGE	1/4" to 1"
WEIGHT (Lb)	7,62
PACKAGING UNIT	150
STEEL BAR DIAMETERS	1/4" to 1"
APPLICATIONS	PROTECTION

## Wall Plastic Spacers

Designed to center and position reinforcement steel (simple mesh)

PRODUCT TYPE	WPS-2 3/8"	WPS-3 1/8"	WPS-3 1/2"	WPS-4"	WPS-4 1/2"	WPS-6"
COVERAGE	3 in	3 1/8"	3 1/2"	4 in	4 1/2"	6 in
CAPACITY (PSI)	2133					
PACKAGING UNIT	500	300		150	100	50
WEIGHT (Lb)	9,35	7,26		7,32	5,50	4,48
SPACERS PER AREA (Yd)	4					
STEEL BAR DIAMETERS	1/4" - 3/8"					
APPLICATIONS	WALLS AND COLUMNS					



## MODULAR ACCESSORIES FOR CONSTRUCTION

Rebar Spacers for Construction in Concrete



Main Office SPARTANBURG  
300 CEDAR SPRINGS RD  
Phone: (+1) (864)-300-2176  
[www.rebarspacersforconcrete.com](http://www.rebarspacersforconcrete.com)

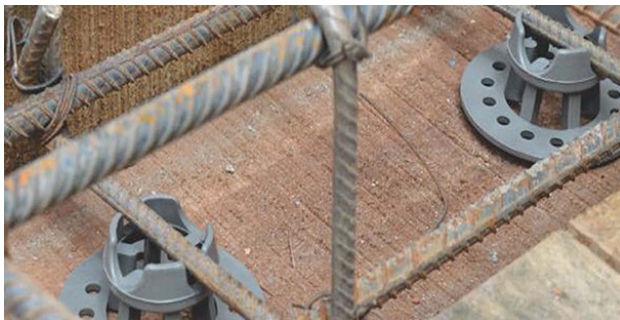
## Wall Plastic Spacers

Designed to center and position reinforcement steel (simple mesh), in vertical or inclined constructions. The wall plastic spacers (WPS) guarantee the positioning of the electro-welded mesh inside the formlets, with a coating ranging from 2.5 cm to 7.5 cm.



## Foundation Plastic Spacers

Foundation plastic spacers (FOPS), are designed for horizontal reinforcement steels to withstand large loads. The Foundation plastic spacers wide support surface guarantees perfect stability both in compacted material and styrofoam surfaces. This added feature helps avoid damage or perforations in the support materials. The Foundation plastic spacers are also designed with a versatile clamping system that is perfect for use in electro-welded mesh or rebar rods up to 5/8 inch in diameter.



## Double Mesh Plastic Spacers

Adjustable and fixed stacer for double mesh, designed for rebar that vary between 5/32 and 3/8. It ensures the position of the two electro-welded meshes inside the form before emptying the concrete, always guaranteeing a coating of 2.5 cm from the forme to the electro-welded mesh.



## Floor Plastic Spacers

Our system has a modern design that facilitates the installation of electro welded meshes, adapting to any type of rebar with diameters ranging from 5/32 to 3/4 (or Steel Grill), allowing to speed up the times in the works and giving an adequate positioning to the steel at the time of emptying, minimizing the risk of cracks and avoiding the corrosion of the steel, in addition to having a good compatibility with the concrete and guaranteeing the structural consistency.



## Pylon Plastic Spacers

Plastic Wheel for Pylon: Guarantees a space of 7.5cm. From the edge of the pylon, complying with the technical standards established. Special size for rod up to 7/8", with an airtight clip that guarantees attachment to the rebar preventing the wheel from being released after installation. This strong gripping distancer ensures the distance of 7.5cm. These are useful where the reinforcement rods are close to each other and it is not possible to use the wheel with a clip fastened. This version can be used for rebar rods from 1/2 to 7/8.



## Rebar Protector

Universal rebar rod protector in bright orange. This product is designed to be used with multiple different rebar rod diameters. The bright color helps provide more industrial safety and signaling. The cap is designed with internal wings that fit perfectly locking into place allow greater clamping of steel. This one product services rebar sizes from 1/4 inch to 1 1/4 inch. With solar protection UV filter for greater durability.

